

HIGHWAY 85 (ARTHUR STREET SOUTH)

DRAFT PLAN OF SUBDIVISION

PART OF LOT 6
 GERMAN COMPANY TRACT
 TOWNSHIP OF WOOLWICH
 REGIONAL MUNICIPALITY OF WATERLOO

ADDITIONAL INFORMATION AS REQUIRED BY SECTION 51(17) OF THE PLANNING ACT, R.S.O. 1990, c. p.13 as amended
 H) MUNICIPAL WATER TO BE SUPPLIED
 I) SANDY OVER SILTY CLAY
 K) MUNICIPAL STORM AND SANITARY SEWERS TO BE SUPPLIED

LOT/BLOCK	USE	NO. OF UNITS	AREA (ha)
LOTS 9-43, 50-102	SINGLE FAMILY RESIDENTIAL	88	4.459ha±
LOTS 1-8, 44-49, 103-106	SEMI - DETACHED RESIDENTIAL	36	1.299ha±
BLOCKS 107-111	STREET TOWNHOUSES (4-6 units)	20-30	0.660ha±
BLOCK 112	WALKWAY/ACCESS		0.024ha±
BLOCK 113	SWM / OPEN SPACE		0.568ha±
BLOCK 114	PARK		0.238ha±
BLOCK 115	PUMPING STATION		0.044ha±
BLOCK 116	WALKWAY / SERVICE EASEMENT		0.035ha±
BLOCKS 117	ROAD WIDENING		0.017ha±
BLOCK 118	WALKWAY		0.009ha±
BLOCKS 119, 121	0.3m RESERVE		0.009ha±
BLOCK 120	OPEN SPACE		6.300ha±
	ROADS		2.104ha±
TOTAL		144-154	15.789ha±

OWNER'S CERTIFICATE
I HEREBY AUTHORIZE THE FILING OF THIS PLAN IN DRAFT FORM.

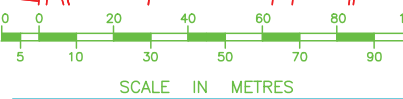
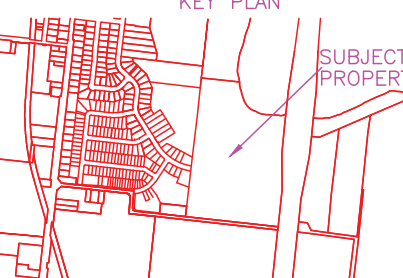
BETINA COOK, PRESIDENT
VALLEY VIEW HEIGHTS (ST. JACOBS) LTD.

OWNER'S CERTIFICATE
I HEREBY AUTHORIZE THE FILING OF THIS PLAN IN DRAFT FORM.

GARY BROCHERD, SECRETARY/TREASURER
VALLEY VIEW HEIGHTS (ST. JACOBS) LTD.

SURVEYOR'S CERTIFICATE
I HEREBY CERTIFY THAT THE BOUNDARIES OF THE LANDS TO BE SUBDIVIDED AND THEIR RELATIONSHIP TO THE ADJACENT LANDS ARE ACCURATELY AND CORRECTLY SHOWN ON THIS PLAN.

ERICH R. FLIEB
ONTARIO LAND SURVEYOR



REVISION: MARCH 2009 JANUARY 21, 2010 PUMP STATION JUNE 25, 2011 NOVEMBER 11, 2011 APRIL 12, 2012 DATE: April 2003 SCALE: 1:750 ACAD. DWG. FILE: 11330 - DRAFT PLAN JOB NO.: 11330 FILE NO.: 11330
--